

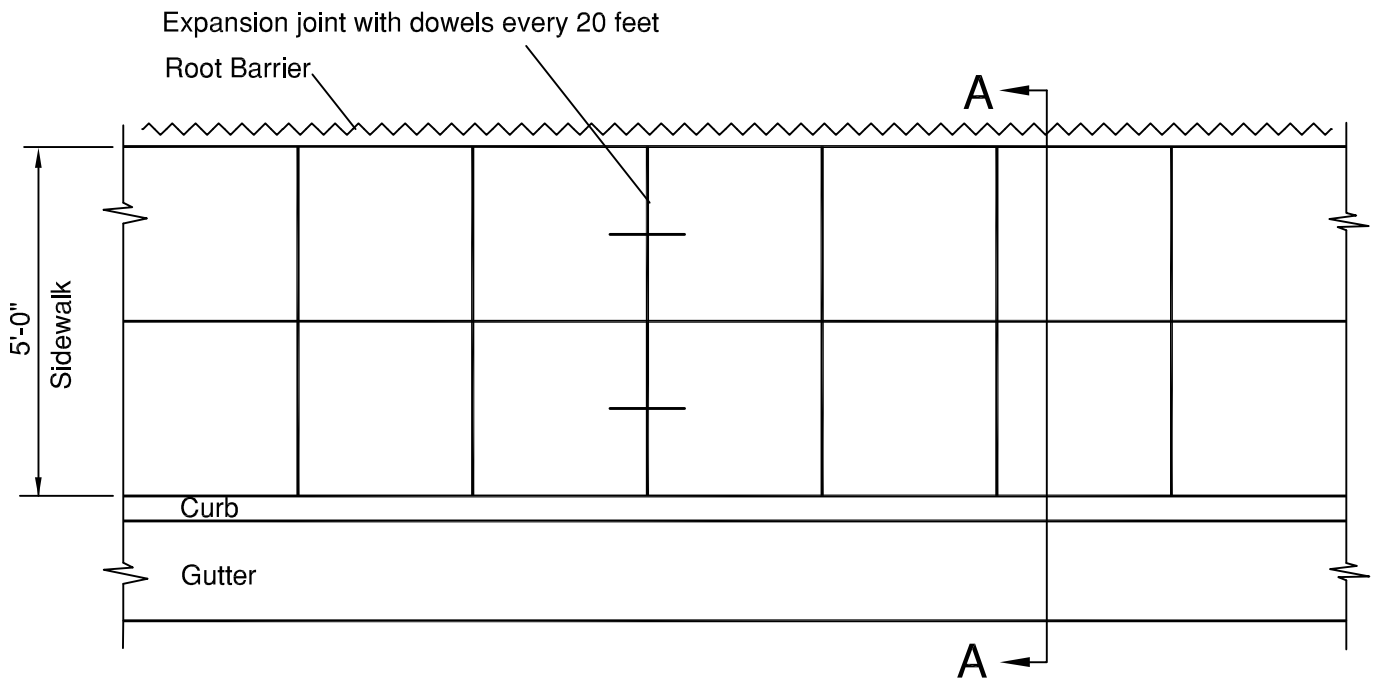
Streets

CITY/EMID STANDARD DETAILS

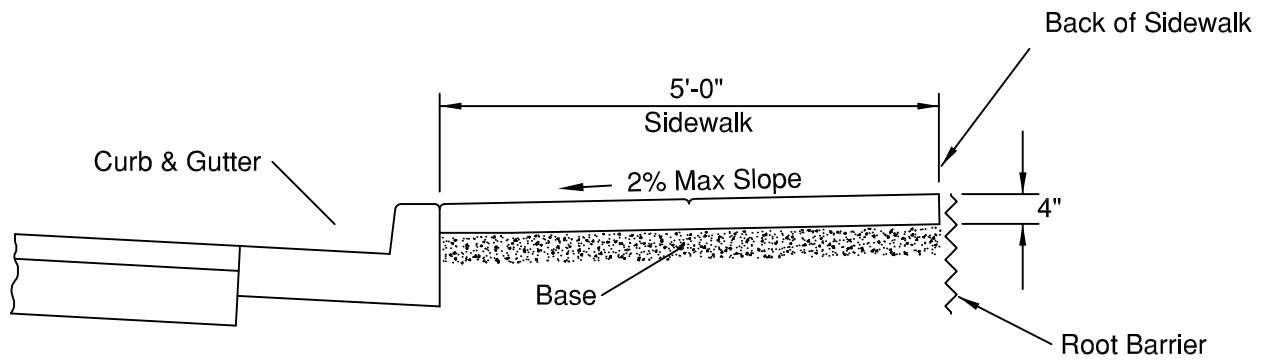
TABLE OF CONTENTS

STREETS

STANDARD SIDEWALK DETAIL	ST 001
SIDEWALK REPLACEMENT	ST 002
CURB DRAIN.....	ST 003
LANDSCAPE CLEARANCES	ST 004
LANDSCAPE CELARANCES AT LIGHT POLES	ST 005
STANDARD CURB AND GUTTER.....	ST 009
BOULEVARD SINGLE-ARM ELECTROLIER.....	ST 020
BOULEVARD DOUBLE-ARM ELECTROLIER	ST 021
RESIDENTIAL ELECTROLIER.....	ST 022
COMMERCIAL DRIVEWAY	ST 025
STREET NAME SIGN DETAIL	ST 030
STREET NAME SIGN DETAIL	ST 031
STREET NAME SIGN DETAIL	ST 032
UTILITY TRENCH -- PAVED AREA	ST 035
UTILITY TRENCH -- UNPAVED AREA	ST 036
ROCKWHEEL TRENCH.....	ST 037



PLAN



SECTION A-A

NOTES:

1. Sidewalk shall be 4" thick Class A (6 Sack) PCC
2. One pint of Lampblack shall be added to each cubic yard of concrete.
3. Base shall be 4" thick Class 2 (1/2" max) AB compacted to 95% relative compaction.
4. Expansion joints with dowels shall be installed every 20 feet and at the end of curb returns.
5. Where new pour abuts existing concrete, 8" long, No. 4 steel rebar shall be installed 4" into existing concrete.
6. Root barrier (80 mil HDPE) 18" deep shall be installed behind all new sidewalk.
7. Dowels shall be 8" long, No 4 steel rebar.

File ~ J:\CITY STANDARD DETAILS 2005\Streets\ST 001.dwg

ESTERO MUNICIPAL IMPROVEMENT DISTRICT
CITY OF FOSTER CITY, CALIFORNIA

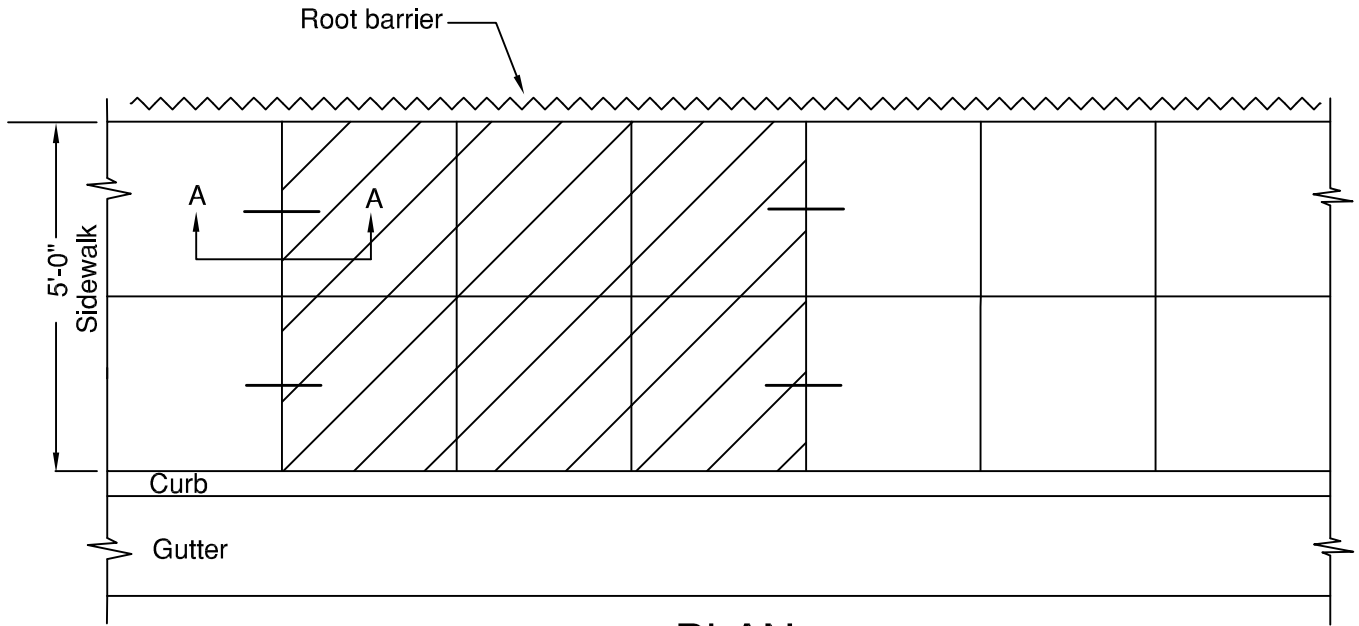
STREETS
STANDARD SIDEWALK DETAIL

Rev	Date	Description
DWN:		Dwg No. ST 001
CHK:		Sheet of

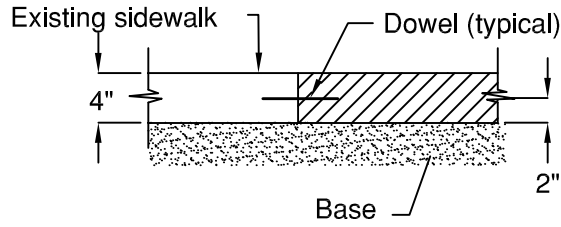
APPROVED: _____
CITY/DISTRICT ENGINEER

APPROVED: _____
DEPARTMENT SUPERVISOR

Scale: None
Date: _____



— PLAN —



— SECTION A -A —

NOTES:

1. Sidewalk shall be 4" thick Class A (6 Sack) PCC.
2. One pint of lampblack shall be added to each cubic yard of concrete.
3. Base shall be 4" thick Class 2 (1/2" max) AB compacted to 95% relative compaction.
4. Expansion joints shall be installed every 20 feet and at the end of curb returns.
5. Where new pour abuts existing concrete, 8" long, No. 4 steel rebar shall be installed 4" into existing concrete.
6. Root barrier (80 mil HDPE) 18" deep shall be installed behind sidewalk where applicable.
7. Sawcut at scoreline and remove only complete squares of concrete.

File ~ J:\CITY STANDARD DETAILS 2005\Streets\ST 002.dwg

ESTERO MUNICIPAL IMPROVEMENT DISTRICT
CITY OF FOSTER CITY, CALIFORNIA

STREETS
SIDEWALK REPLACEMENT

Rev	Date	Description
DWN:		Dwg No. ST 002
CHK:		Sheet of

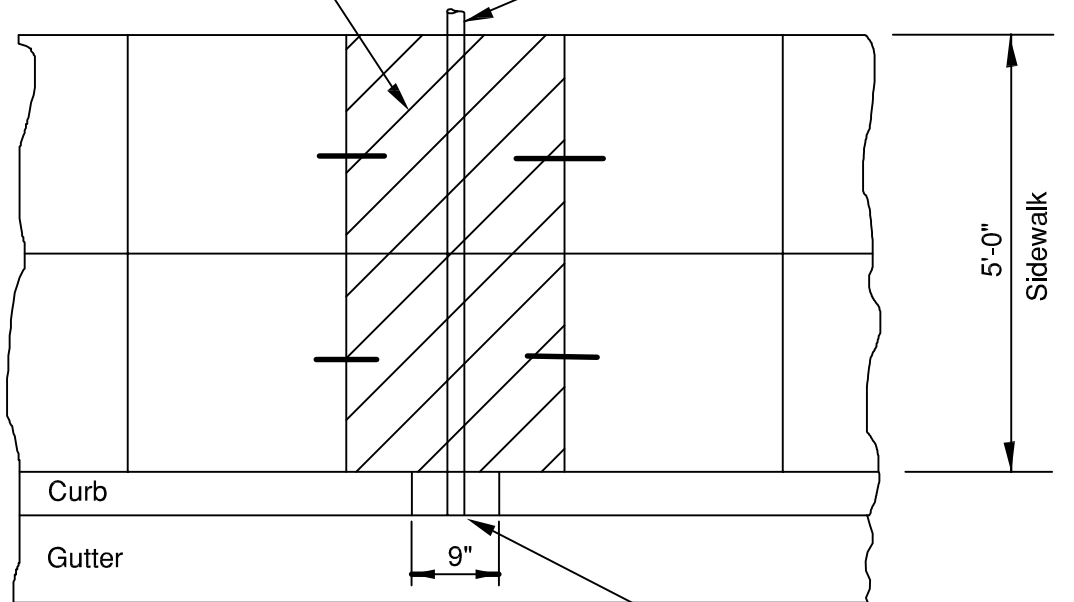
APPROVED: _____
CITY/DISTRICT ENGINEER

APPROVED: _____
DEPARTMENT SUPERVISOR

Scale: None
Date: _____

Remove and replace sidewalk

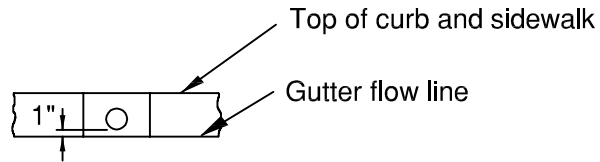
3" Diameter PVC pipe



'A' 'A'

- PLAN -

Cut pipe flush with face of curb



- SECTION A-A -

NOTES:

1. Sidewalk shall be 4" thick Class A (6 Sack) PCC.
2. One pint of lampblack shall be added to each cubic yard of concrete.
3. Base shall be 4" thick Class 2 (1/2" max) AB compacted to 95% relative compaction.
4. Drain pipe shall be 3" Schedule 40 PVC for 6" curb face.
5. Where new pour abuts existing concrete, 8" long, No. 4 steel rebar shall be installed 4" into existing concrete.
6. Root barrier (80 mil HDPE) 18" deep shall be installed behind sidewalk where applicable.
7. Core drill or remove 9" of curb to install pipe.
8. Sawcut at scoreline and remove only complete squares of sidewalk.

File ~ J:\CITY STANDARD DETAILS 2005\Streets\ST 003.dwg

ESTERO MUNICIPAL IMPROVEMENT DISTRICT
CITY OF FOSTER CITY, CALIFORNIA

STREETS
CURB DRAIN

Rev	Date	Description
DWN:		Dwg No. ST 003
CHK:		Sheet of

APPROVED: _____
CITY/DISTRICT ENGINEER

APPROVED: _____
DEPARTMENT SUPERVISOR

Scale: None
Date:

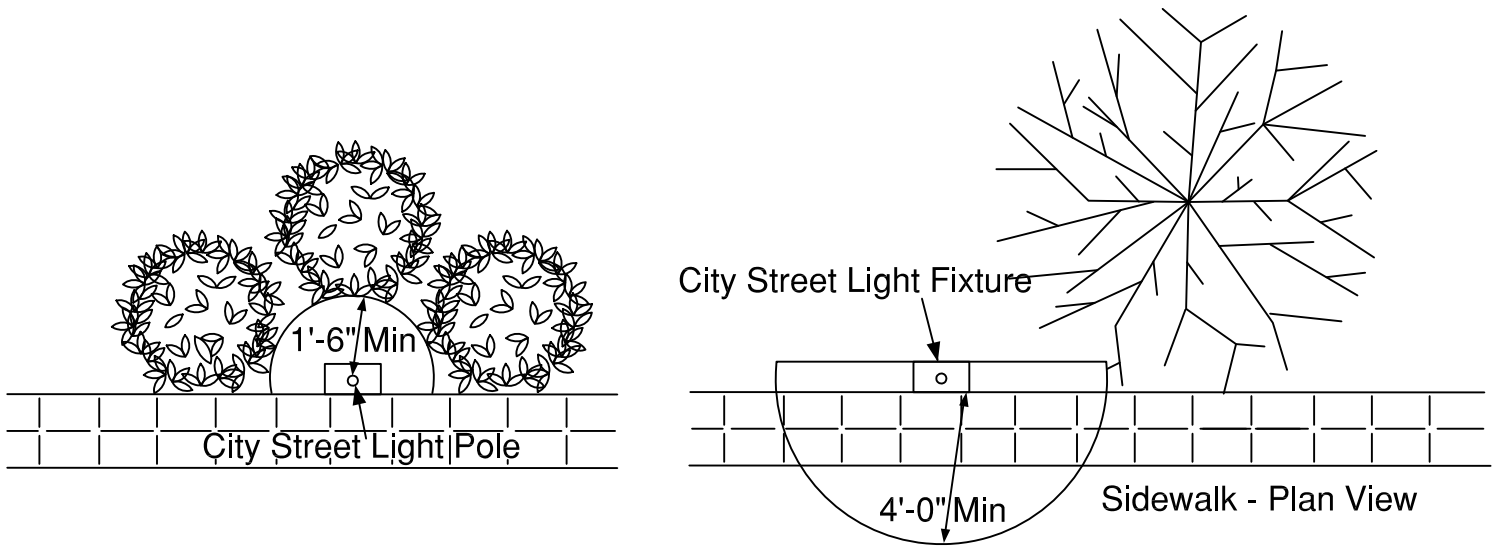
4'-0" Minimum clearance around fixture

Minimum clearance around pole

1'-6" Min 1'-6" Min

City Street Light Pole

Sidewalk - Elevation View



To allow for proper illumination of the sidewalk and roadway, all landscape must be trimmed so that no part of the tree/bush/hedge:

1. Covers the top or front of the street light fixture
2. Comes within 4'-0" front or sides of the street light fixture
3. Grows in front of the light pole
4. Grows within 1'-6" of the sides or back of the light pole

File ~ J:\CITY STANDARD DETAILS 2005\Streets\ST 005-1.dwg

ESTERO MUNICIPAL IMPROVEMENT DISTRICT
CITY OF FOSTER CITY, CALIFORNIA

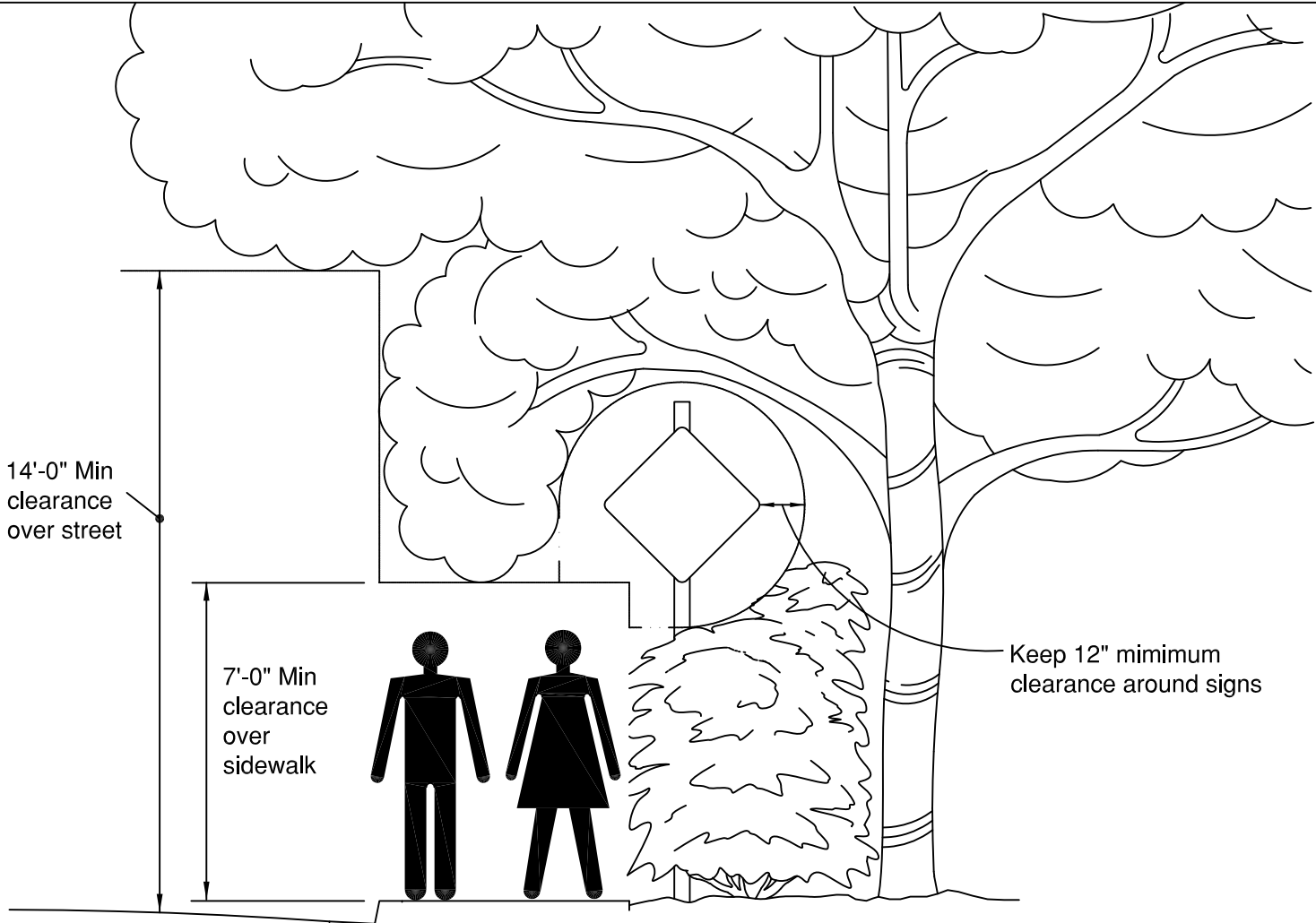
STREETS
LANDSCAPE CLEARANCES AT LIGHT POLES

Rev	Date	Description
DWN:		Dwg No. ST 005
CHK:		Sheet of

APPROVED: _____
CITY/DISTRICT ENGINEER

APPROVED: _____
DEPARTMENT SUPERVISOR

Scale: None
Date:



NOTES

1. KEEP ALL TREES AND SHRUBS CLEAR OF SIDEWALKS, STREETS, SIGNS, AND SIGNALS.
2. NO PERSON MAY INSTALL, SET OUT, OR MAINTAIN ANY FENCE, HEDGE, SHRUBBERY, NATURAL GROWTH, OR OTHER OBSTRUCTION WHICH IMPEDES THE VIEW OF A VEHICLE OPERATOR OF ANY TRAFFIC SIGNAL, STOP SIGN, OR YIELD SIGN. TRAFFIC SIGNALS, STOP SIGNS, AND YIELD SIGNS MUST BE COMPLETELY AND CONTINUOUSLY VISIBLE FROM A POINT OF NINE FEET FROM THE RIGHT EDGE OF THE TRAVEL LANE AND AT A MINIMUM DISTANCE IN ADVANCE OF THE TRAFFIC CONTROL DEVICES LISTED IN TABLE 1. IF IT IS IMPRACTICAL TO ACHIEVE THE NECESSARY SIGHT DISTANCE IN ADVANCE OF A TRAFFIC CONTROL DEVICE, THE CITY/DISTRICT ENGINEER MAY CONSIDER ALTERNATIVE MITIGATION MEASURES.

DESIGN SPEED (MPH)	MINIMUM VISIBILITY DISTANCE (FT)
15	100
20	125
25	150
30	200
35	250
40	300
45	360

File ~ J:\CITY STANDARD DETAILS 2005\Streets\ST 004.dwg

ESTERO MUNICIPAL IMPROVEMENT DISTRICT
CITY OF FOSTER CITY, CALIFORNIA

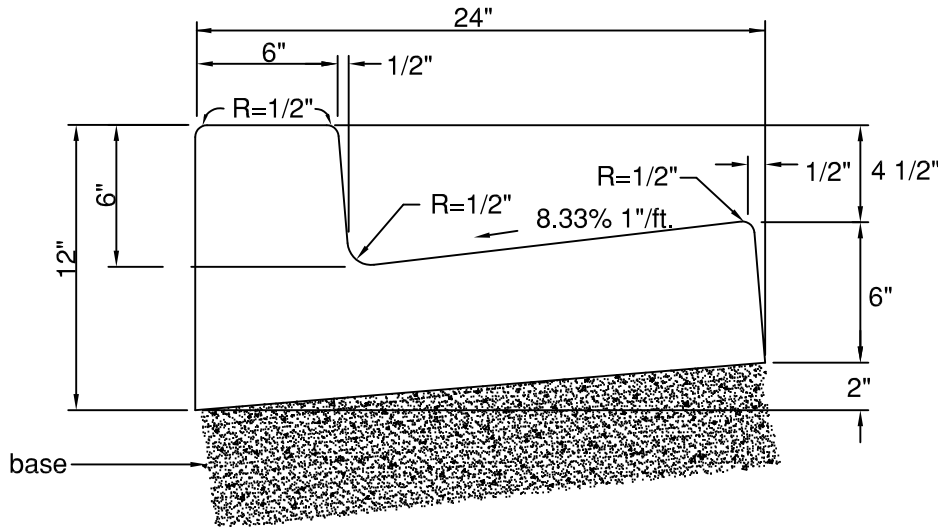
STREETS
LANDSCAPE CLEARANCES

Rev	Date	Description
DWN:		Dwg No. ST 004
CHK:		Sheet of

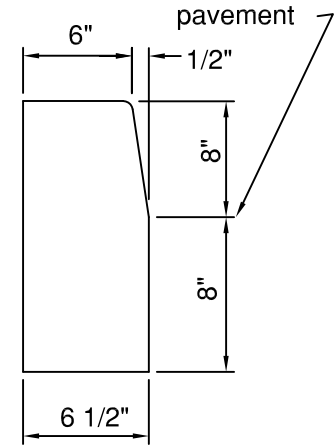
APPROVED: _____
CITY/DISTRICT ENGINEER

APPROVED: _____
DEPARTMENT SUPERVISOR

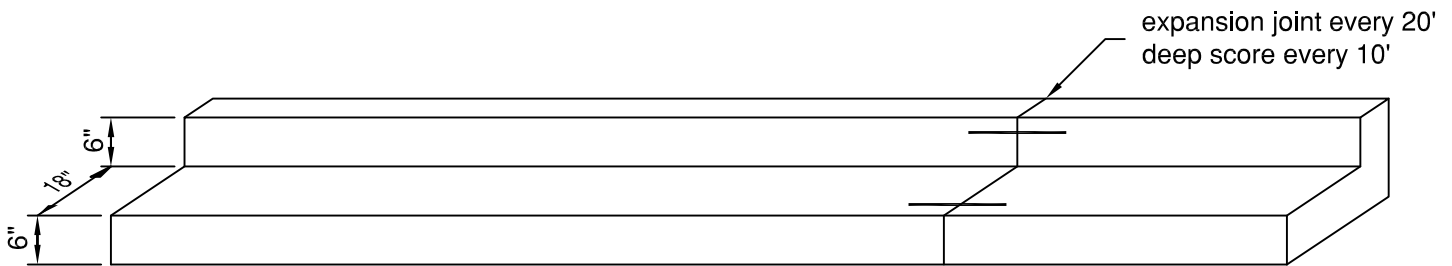
Scale: None
Date: _____



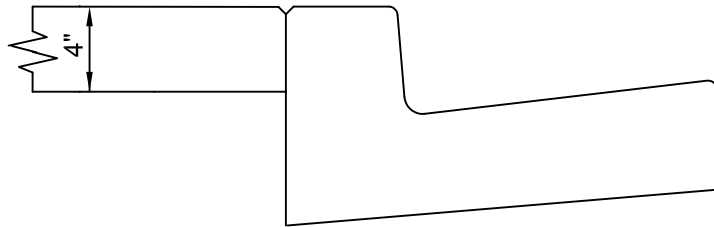
STANDARD CURB AND GUTTER



MEDIAN CURB



PLAN



NOTES:

1. Curb and gutter shall be 6" thick Class A (6 sack) PCC.
2. One pint of lampblack shall be added per cubic yard of concrete.
3. Base shall be 6" thick Class 2 (1/2" max) AB compaction to 95% relative compaction.
4. Where new concrete abuts existing concrete, 8" long No. 4 steel rebar shall be installed 4" into existing concrete.
5. Two feet of asphalt must be replaced when curb and gutter are repaired.

ESTERO MUNICIPAL IMPROVEMENT DISTRICT
CITY OF FOSTER CITY, CALIFORNIA

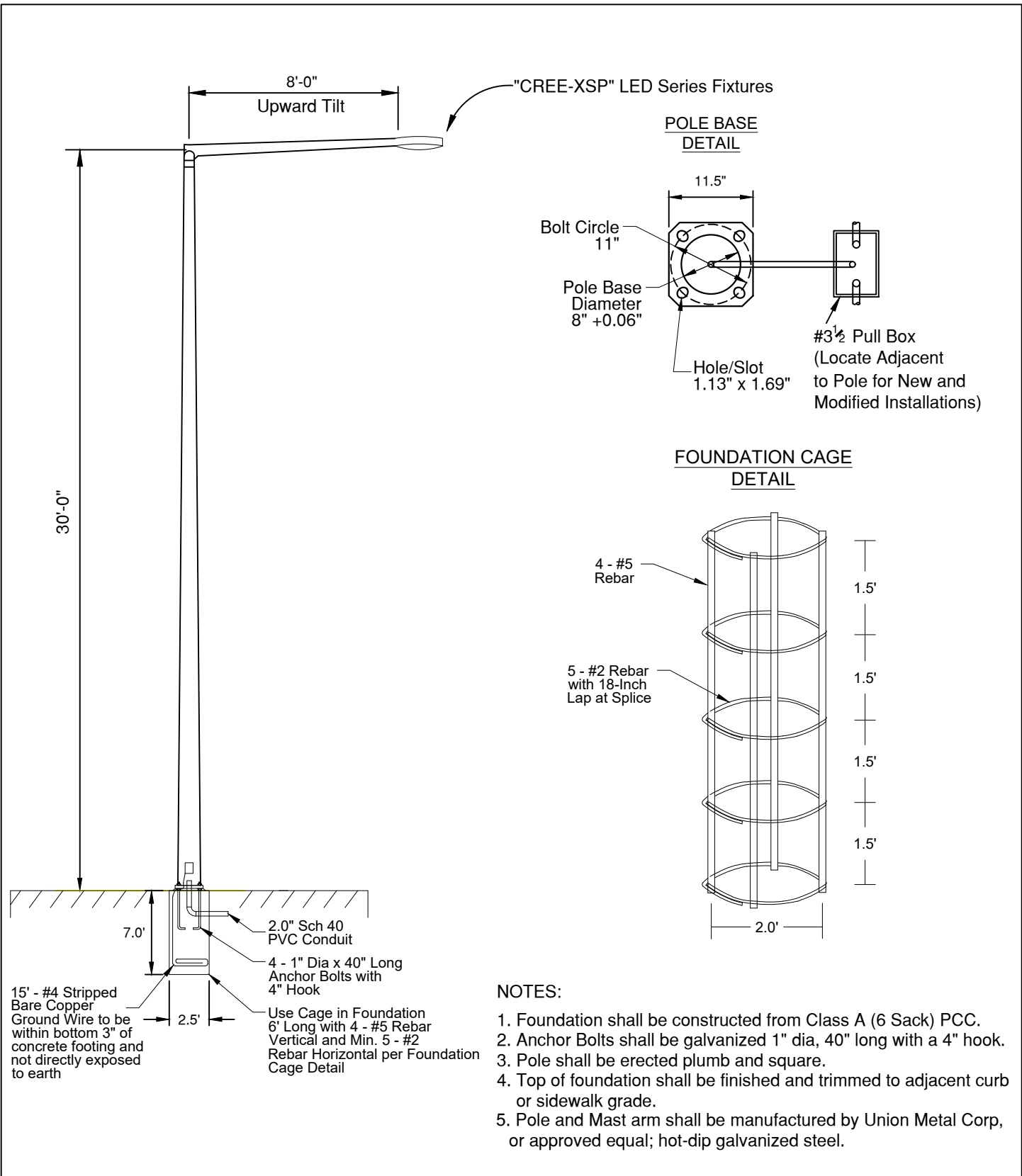
STREETS
STANDARD CURB AND GUTTER

Rev	Date	Description

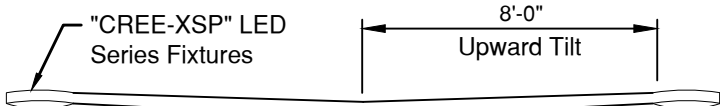
APPROVED: _____
CITY/DISTRICT ENGINEER

APPROVED: _____
DEPARTMENT SUPERVISOR

Dwg No. STS 09
Sht. ____ of ____
Scale: None
Date: DEC. 2002

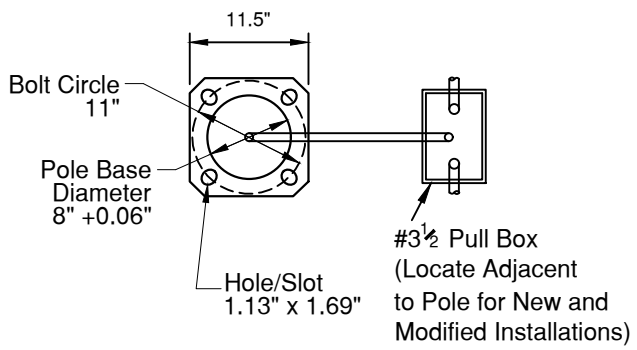


ESTERO MUNICIPAL IMPROVEMENT DISTRICT CITY OF FOSTER CITY, CALIFORNIA				
STREETS BOULEVARD SINGLE-ARM ELECTROLIER & FOUNDATION		Rev	Date	Description
		DWN:		Dwg No. ST 020
APPROVED: _____		CHK:	Sheet	1 of 1
CITY/DISTRICT ENGINEER		APPROVED: _____	Scale: None	
		DEPARTMENT SUPERVISOR	Date: MAY 2020	

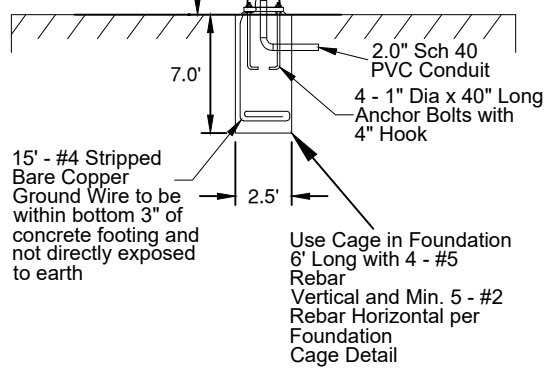
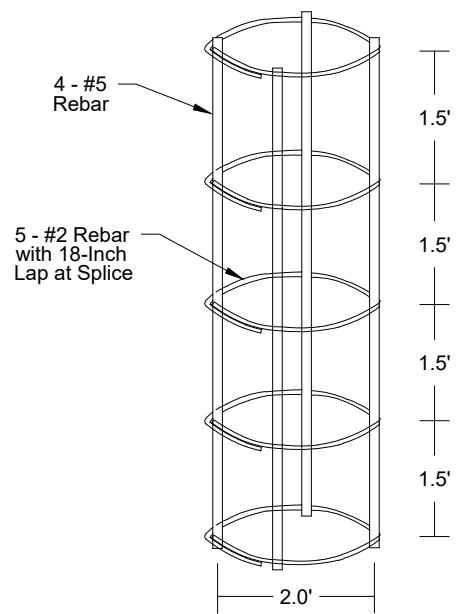


30'-0"

**POLE BASE
DETAIL**



**FOUNDATION CAGE
DETAIL**



NOTES:

1. Foundation shall be constructed from Class A (6 Sack) PCC.
2. Anchor Bolts shall be galvanized 1" dia, 40" long with a 4" hook.
3. Pole shall be erected plumb and square.
4. Top of foundation shall be finished and trimmed to adjacent curb or sidewalk grade.
5. Pole and Mast arm shall be manufactured by Union Metal Corp, or approved equal; hot-dip galvanized steel.

ESTERO MUNICIPAL IMPROVEMENT DISTRICT
CITY OF FOSTER CITY, CALIFORNIA

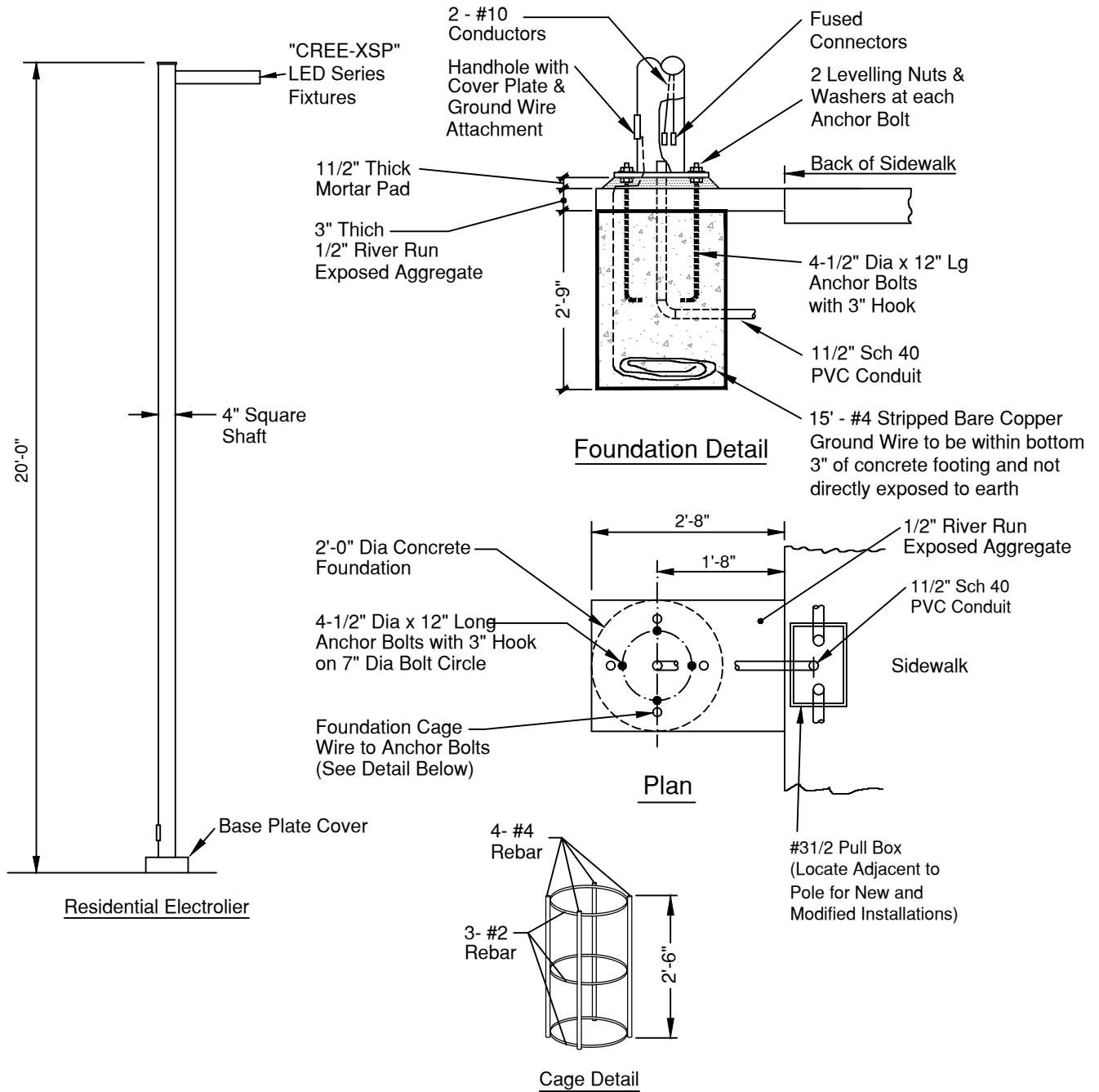
**STREETS
BOULEVARD DOUBLE-ARM ELECTROLIER & FOUNDATION**

Rev	Date	Description
DWN:		Dwg No. ST 021
CHK:		Sheet 1 of 1

APPROVED: _____
CITY/DISTRICT ENGINEER

APPROVED: _____
DEPARTMENT SUPERVISOR

Scale: None
Date: MAY 2020



NOTES:

1. Foundation shall be constructed from Class A (6 Sack) PCC.
2. Anchor Bolts shall be galvanized 1/2" dia, 12" long with a 3" hook.
3. Pole shall be erected plumb and square.
4. Pole shall be KW SSP or approved equal; Square Non-Tapered Steel; hot-dip galvanized steel.

ESTERO MUNICIPAL IMPROVEMENT DISTRICT
CITY OF FOSTER CITY, CALIFORNIA

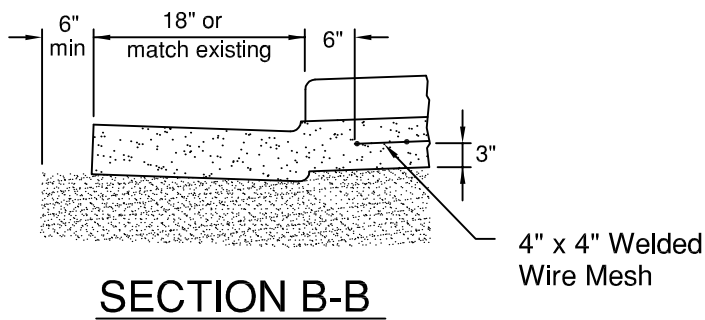
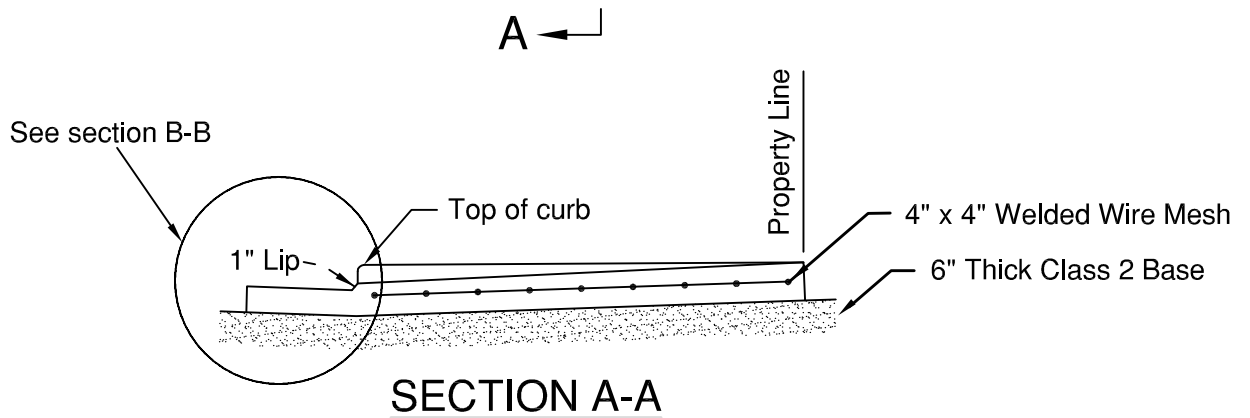
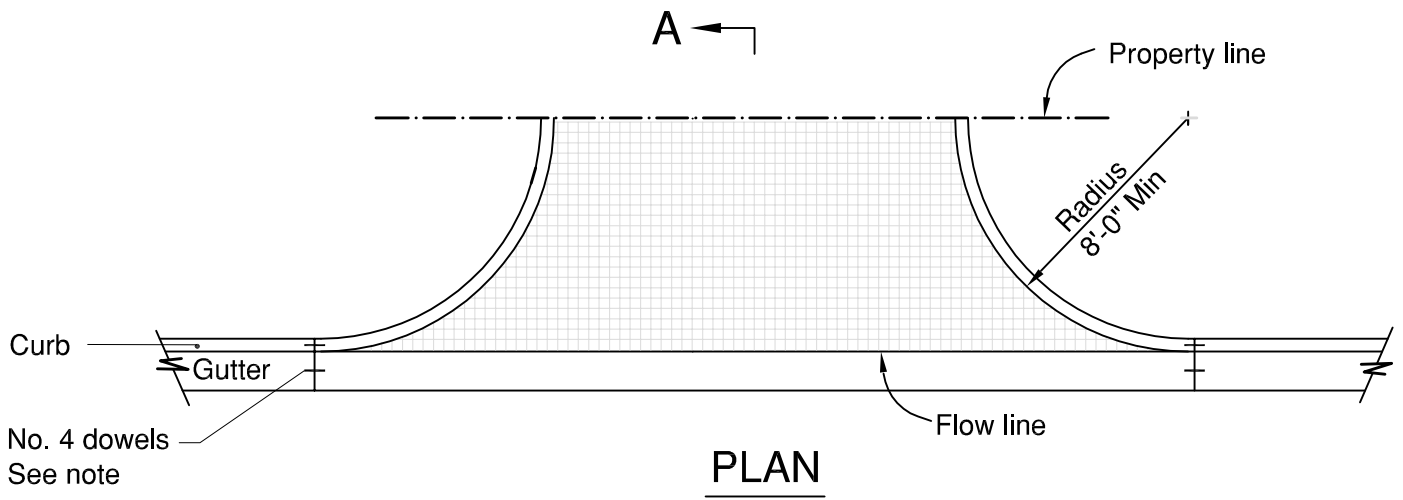
STREETS
RESIDENTIAL ELECTROLIER & FOUNDATION

Rev	Date	Description
DWN:		Dwg No. ST 022
CHK:		Sheet 1 of 1

APPROVED: _____
CITY/DISTRICT ENGINEER

APPROVED: _____
DEPARTMENT SUPERVISOR

Scale: None
Date: MAY 2020



NOTES:

1. Driveway shall be 6" thick Class A (6 Sack) PCC.
2. One pint of lampblack shall be added to each cubic yard of concrete.
3. Driveway Base shall be 6" thick Class 2 (1/2" max) AB compacted to 95% relative compaction.
4. Welded Wire Mesh 4"x4" shall be installed over entire driveway area
5. Where new pour abuts existing concrete, 8" long, No. 4 steel rebar shall be installed 4" into existing concrete.
6. Root barrier 18" deep shall be installed behind sidewalk where applicable.

File - J:\CITY STANDARD DETAILS 2005\Streets\ST 025.dwg

ESTERO MUNICIPAL IMPROVEMENT DISTRICT
CITY OF FOSTER CITY, CALIFORNIA

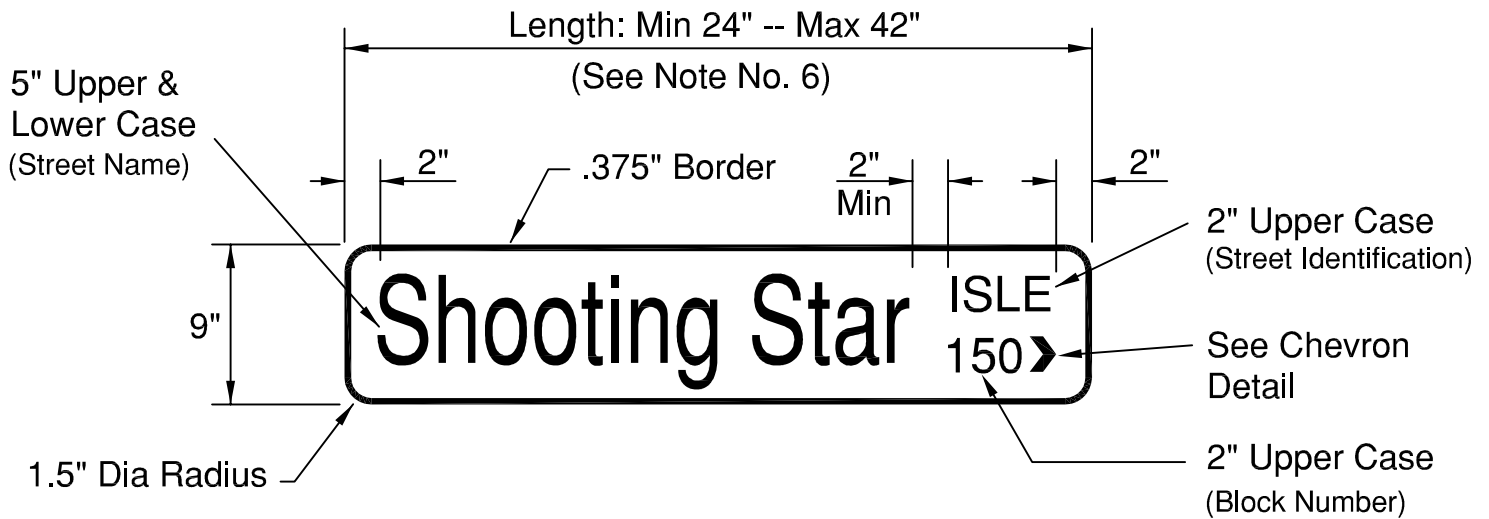
STREETS
COMMERCIAL DRIVEWAY

Rev	Date	Description
DWN:		Dwg No. ST 025
CHK:		Sheet of

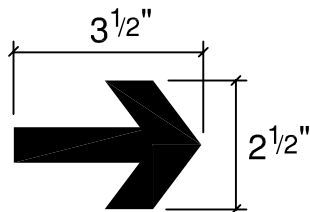
APPROVED: _____
CITY/DISTRICT ENGINEER

APPROVED: _____
DEPARTMENT SUPERVISOR

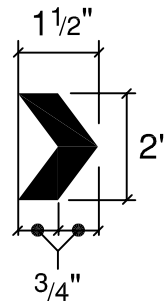
Scale: None
Date:



TYPICAL RESIDENTIAL STREET NAME SIGN



Arrow Detail
(Type 'H' Signs Only)



Chevron Detail

NOTES:

1. Sign blade shall be .080 ga aluminum.
2. Reflective sheeting shall be white 3M Scotchlite, Diamond Grade, VIP or Engineer approved equal.
3. Sign face shall be blue Silk Screened and ink shall conform to 3M Series 880 or Engineer approved equal.
4. Street name letters shall be Highway Gothic, Type 'C' font, 5" high upper and lower case.
5. Street identification letters and block number (if required) shall be 2" Highway Gothic, Type 'C' font, upper case
6. Spacing between letters shall be a minimum of one stroke width.

File ~ J:\CITY STANDARD DETAILS 2005\Streets\ST 030.dwg

ESTERO MUNICIPAL IMPROVEMENT DISTRICT
CITY OF FOSTER CITY, CALIFORNIA

STREETS
STREET NAME SIGN DETAIL

Rev	Date	Description
DWN:		Dwg No. ST 030
CHK:		Sheet 1 of 3

APPROVED: _____
CITY/DISTRICT ENGINEER

APPROVED: _____
DEPARTMENT SUPERVISOR

Scale: None
Date: _____



(FRONT)

TYPE 'A'

SINGLE SIDE (No Block Designation)



(FRONT)

TYPE 'B'

SINGLE SIDE
Block No. with Chevron pointing right



(FRONT)

TYPE 'C'

SINGLE SIDE
Block No. with Chevron pointing left



(FRONT & BACK)

TYPE 'D'

DOUBLE SIDE (No Block Designation)



(FRONT & BACK)

TYPE 'E'

DOUBLE SIDE
Block END

TYPE 'F'

DOUBLE SIDE

Block No. with Chevron pointing right on front of sign

Block No. with Chevron pointing left on back of sign



(FRONT)



(BACK)

File - J:\CITY STANDARD DETAILS 2005\Streets\ST 031.dwg

ESTERO MUNICIPAL IMPROVEMENT DISTRICT
CITY OF FOSTER CITY, CALIFORNIA

STREETS
STREET NAME SIGN DETAIL

Rev	Date	Description
DWN:		Dwg No. ST 031
CHK:		Sheet 2 of 3

APPROVED: _____
CITY/DISTRICT ENGINEER

APPROVED: _____
DEPARTMENT SUPERVISOR

Scale: None
Date:



(FRONT)

TYPE 'G'

SINGLE SIDE Block END

TYPE 'H'

DOUBLE SIDE

Arrow pointing right on front of sign

Arrow pointing left on back of sign



(FRONT)



(BACK)



(FRONT)

TYPE 'I'

SINGLE SIDE

Arrow pointing right



(FRONT)

TYPE 'J'

SINGLE SIDE

Arrow pointing left

File ~ J:\CITY STANDARD DETAILS 2005\Streets\ST 032.dwg

ESTERO MUNICIPAL IMPROVEMENT DISTRICT
CITY OF FOSTER CITY, CALIFORNIA

STREETS
STREET NAME SIGN DETAIL

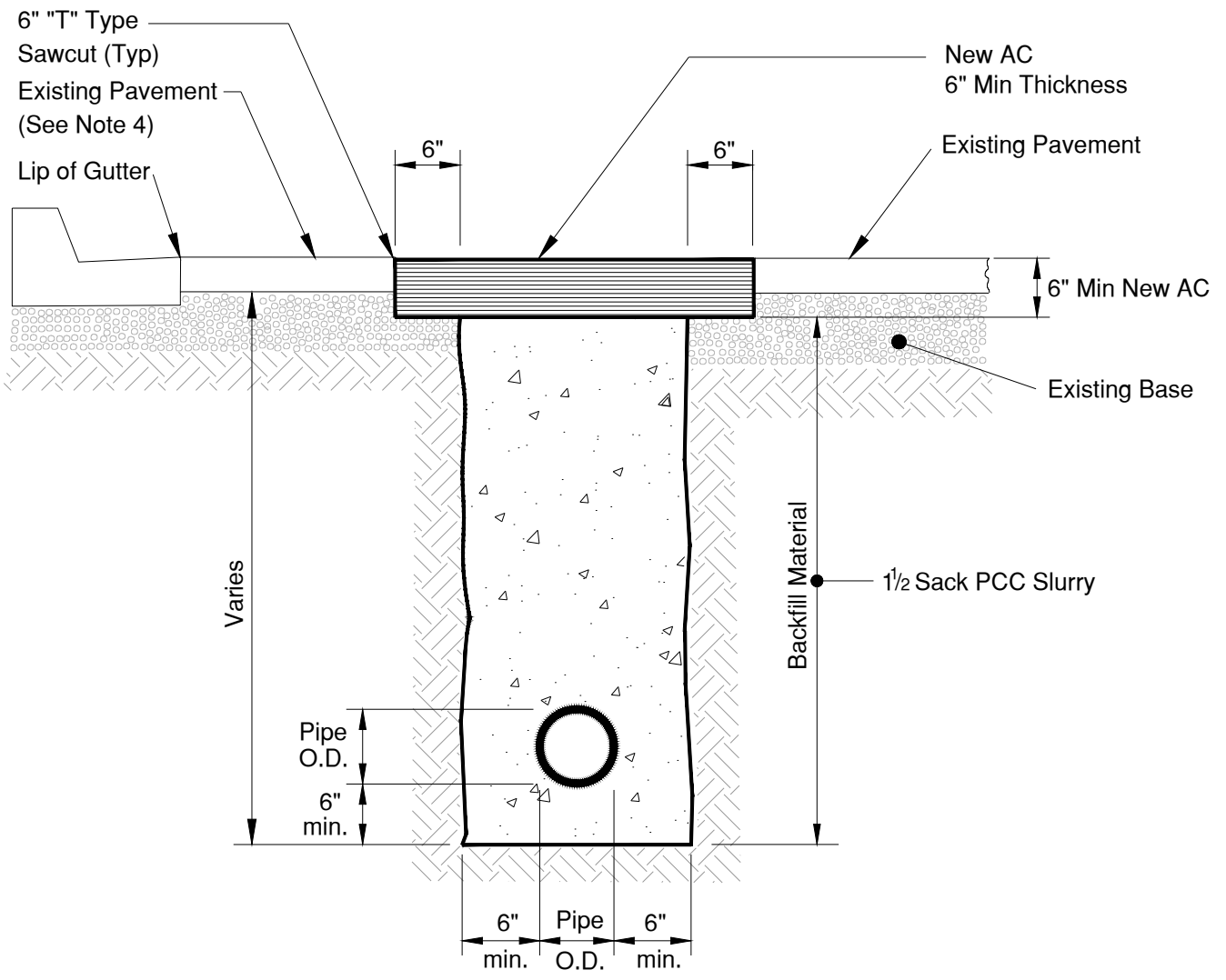
Rev	Date	Description
DWN:		Dwg No. ST 032
CHK:		Sheet 3 of 3

APPROVED: _____
CITY/DISTRICT ENGINEER

APPROVED: _____
DEPARTMENT SUPERVISOR

Scale: None
Date:

J:\FOST02-DrainageStandards\Drawings_UPDATED\ST 035.dwg, 5/11/2015 4:15:01 PM, 1:1



NOTES:

1. All trench excavations shall conform to Article 6 of the State of California Construction Safety Orders.
2. Excavated bay mud shall be properly disposed of outside Foster City limits.
3. Bedding material shall be sand for non-liquid carrying ducts.
4. If the edge of the "T" type sawcut falls within 24" of the lip of gutter, that entire section of pavement shall be removed and replaced.
5. All street cuts shall have slurry seal applied 12" on each side of the sawcut.

ESTERO MUNICIPAL IMPROVEMENT DISTRICT
CITY OF FOSTER CITY, CALIFORNIA

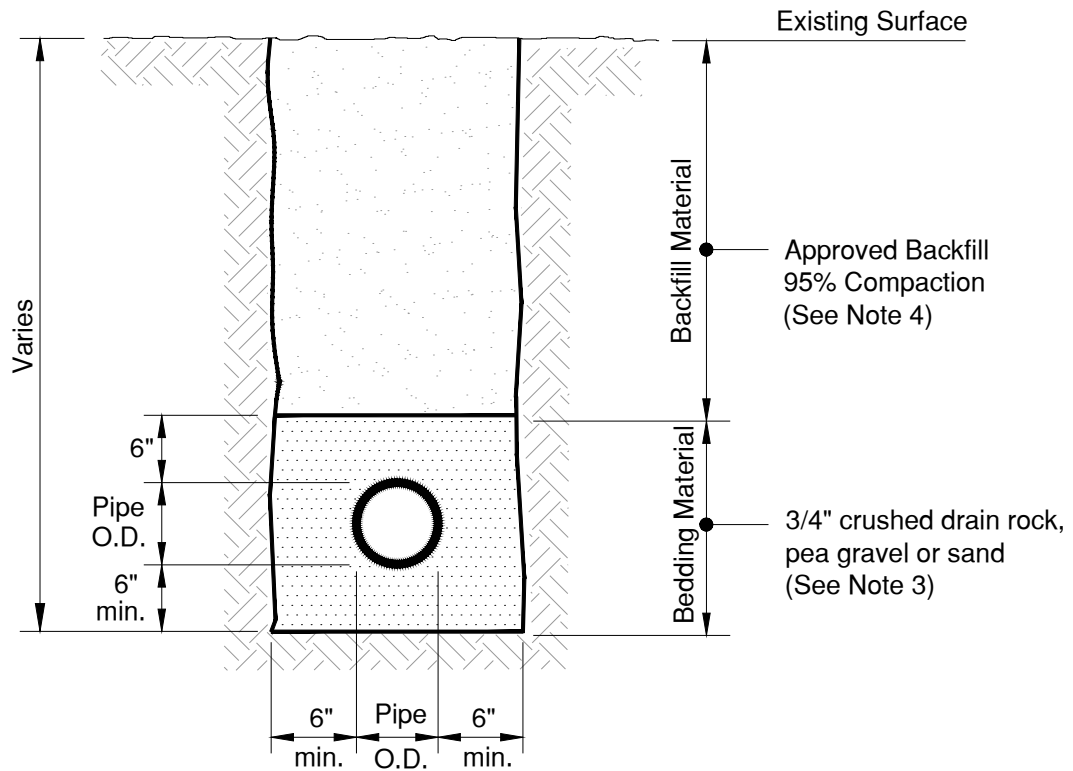
STREETS
UTILITY TRENCH - PAVED AREA

Rev	Date	Description
DWN:		Dwg No. ST 035
CHK:		Sheet 1 of 1

APPROVED: _____
CITY/DISTRICT ENGINEER

APPROVED: _____
DEPARTMENT SUPERVISOR

Scale: None
Date: APR. 2015



NOTES:

1. All trench excavations shall conform to Article 6 of the State of California Construction Safety Orders.
2. Excavated bay mud shall be properly disposed of outside Foster City limits.
3. Bedding material shall be:
 - a. 3/4" crushed drain rock for sewer, pea gravel/sand for other liquid carrying ducts.
 - b. Sand for non-liquid carrying ducts.
4. Backfill material shall be:
 - a. Material from excavation free from any debris, vegetation, stones, etc.
 - b. Approved imported backfill material.

ESTERO MUNICIPAL IMPROVEMENT DISTRICT
CITY OF FOSTER CITY, CALIFORNIA

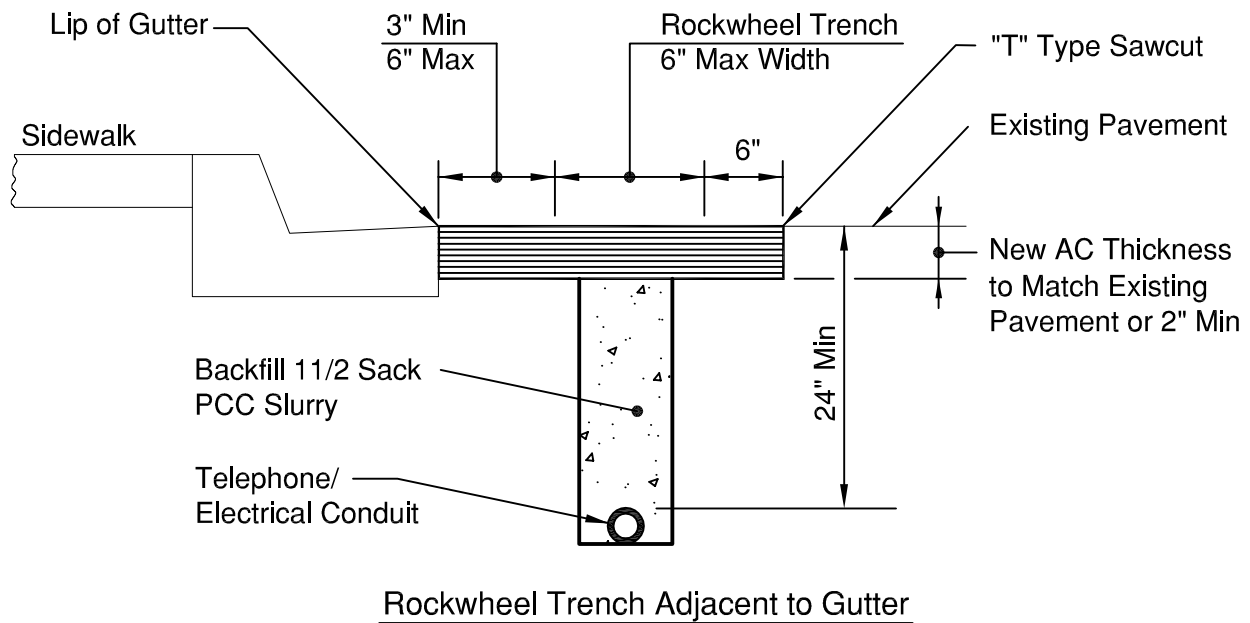
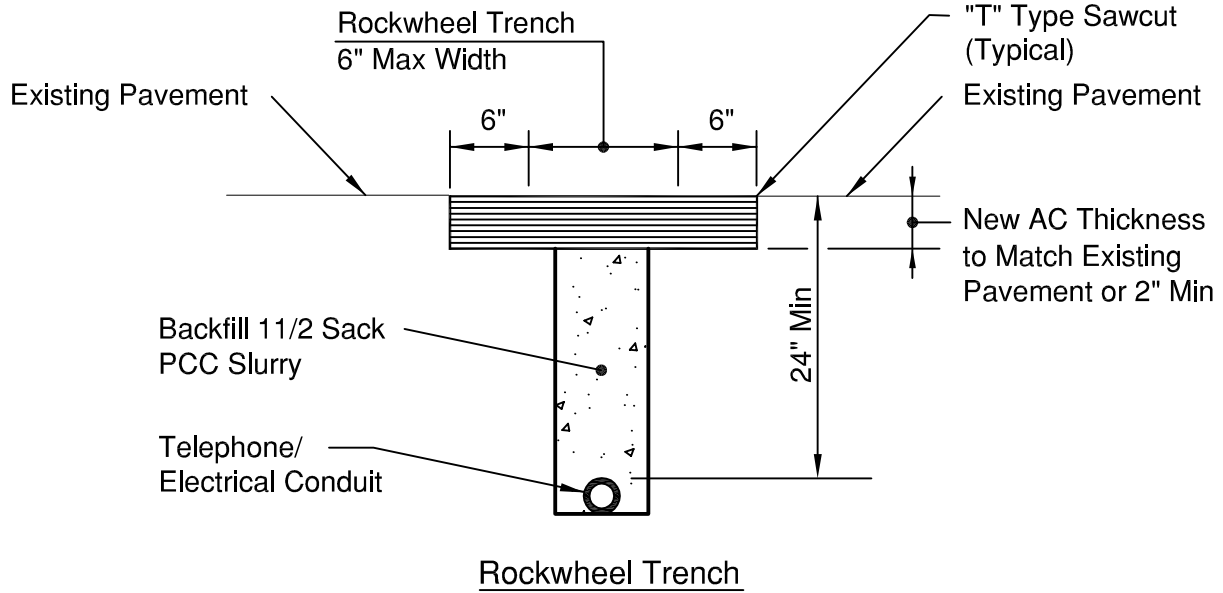
STREETS
UTILITY TRENCH - UNPAVED AREA

Rev	Date	Description
DWN:		Dwg No. ST 036
CHK:		Sheet 1 of 1

APPROVED: _____
CITY/DISTRICT ENGINEER

APPROVED: _____
DEPARTMENT SUPERVISOR

Scale: None
Date: APR. 2015



NOTES:

1. Excavated Bay Mud shall be properly disposed of outside Foster City limits.
2. Backfill Material shall be 1 1/2 Sack PCC Slurry

File ~ J:\CITY STANDARD DETAILS 2005\Streets\ST 037.dwg

ESTERO MUNICIPAL IMPROVEMENT DISTRICT
CITY OF FOSTER CITY, CALIFORNIA

STREETS
ROCKWHEEL TRENCH

Rev	Date	Description
DWN:		Dwg No. ST 037
CHK:		Sheet of

APPROVED: _____
CITY/DISTRICT ENGINEER

APPROVED: _____
DEPARTMENT SUPERVISOR

Scale: None
Date: