

APPENDIX E

Noise Measurements Data Report

Noise Measurements Data Report

A Casella CEL-633C2 noise meter was used for the noise level measurements. The meter was calibrated before the measurements to ensure the accuracy. The temperature of the period of time the measurements were taken ranged from approximately 59 degrees Fahrenheit (°F) to about 65 °F. Humidity ranged from approximately 53 to 60 percent. The wind was generally from the west to southwest and ranged from 11 miles per hour (MPH) to 14 MPH during the noise measurement activity

Measurement Location M-1

Noise measurements from location M-1 were collected within Segment 2 of the project site, located approximately 26 feet north of the northern edge of East 3rd Avenue near Foster City Boulevard. The primary sources of noise were traffic on East 3rd Avenue and aircraft operations. The 15-minute Leq was measured at 61.7 dBA.

Measurement Location M-2

Noise measurements from location M-2 were collected near eastern end of Segment 2 of the project site, located approximately 300 feet east of SR 92 in New Foster City Park. The primary sources of noise were traffic on SR 92, aircraft operations, and geese in the park. The 15-minute Leq was measured at 68.7 dBA.

Measurement Location M-3

Noise measurements from location M-3 were collected within Segment 3 of the project site, located approximately 45 feet east of the eastern edge of Beach Park Boulevard near Tarpon Street. The primary sources of noise were traffic on Beach Park Boulevard, aircraft operations, and Bowditch Middle School (from broadcasting and students). The 15-minute Leq was measured at 59.8 dBA.

Measurement Location M-4

Noise measurements from location M-4 were collected within Segment 4 of the project site, located approximately 40 feet east of eastern edge of Beach Park Boulevard near Foster City Boulevard. The primary sources of noise were traffic on Beach Park Boulevard, traffic from Foster City Boulevard turning on Beach Park Boulevard, and aircraft operations. The 15-minute Leq was measured at 53.8 dBA.

Measurement Location M-5

Noise measurements from location M-5 were collected near Segment 5 of the project site, located between the Sea Cloud Park and the proposed staging area close to the park. The primary sources of noise were aircraft operations and noise from the crows. The 15-minute Leq was measured at 55.5 dBA.


Measurement Location M-6

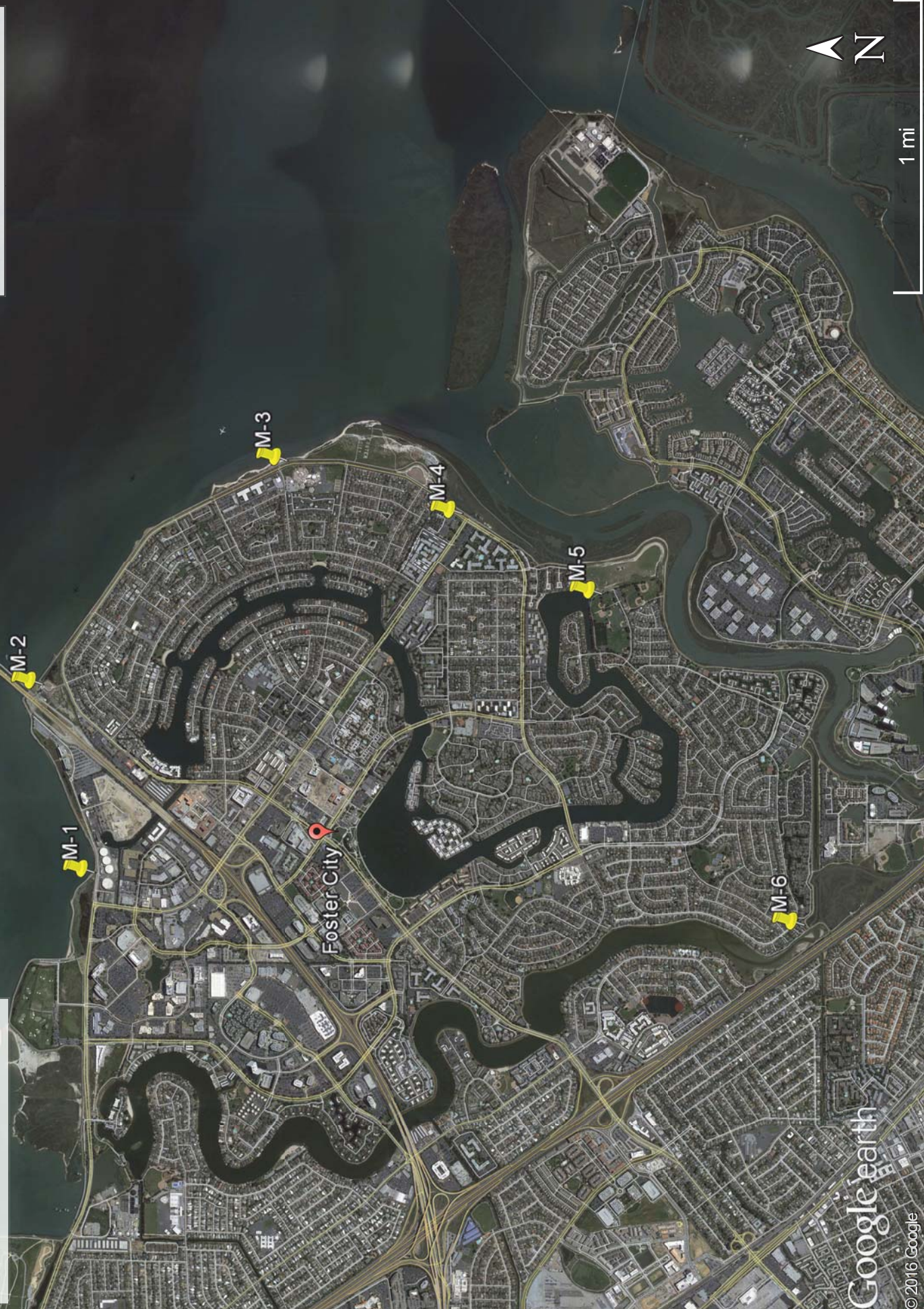
Noise measurements from location M-6 were collected at the western end of Segment 8 of the project site, located approximately 400 feet east of U.S. 101. The primary sources of noise were traffic on U.S. 101 and a barking dog. The 15-minute Leq was measured at 60.8 dBA.

Foster City Levee

Noise measurements locations

Legend

 Measurement Locations



***** CASE INFORMATION *****

***** Results calculated with TNM Version 2.5 *****

East 3rd Avenue East of Foster City Boulevard Existing

***** TRAFFIC VOLUME/SPEED INFORMATION *****

Automobile volume (v/h):	939.0
Average automobile speed (mph):	40.0
Medium truck volume (v/h):	0.0
Average medium truck speed (mph):	0.0
Heavy truck volume (v/h):	0.0
Average heavy truck speed (mph):	0.0
Bus volume (v/h):	0.0
Average bus speed (mph):	0.0
Motorcycle volume (v/h):	0.0
Average Motorcycle speed (mph):	0.0

***** TERRAIN SURFACE INFORMATION *****

Terrain surface: hard

***** RECEIVER INFORMATION *****

DESCRIPTION OF RECEIVER # 1

person

Distance from center of 12-ft wide, single lane roadway (ft): 50.0
A-weighted Hourly Equivalent Sound Level without Barrier (dBA): 65.5

***** CASE INFORMATION *****

***** Results calculated with TNM Version 2.5 *****

East 3rd Avenue East of Foster City Boulevard Existing+Project

***** TRAFFIC VOLUME/SPEED INFORMATION *****

Automobile volume (v/h):	939.0
Average automobile speed (mph):	40.0
Medium truck volume (v/h):	0.0
Average medium truck speed (mph):	0.0
Heavy truck volume (v/h):	15.0
Average heavy truck speed (mph):	40.0
Bus volume (v/h):	0.0
Average bus speed (mph):	0.0
Motorcycle volume (v/h):	0.0
Average Motorcycle speed (mph):	0.0

***** TERRAIN SURFACE INFORMATION *****

Terrain surface: hard

***** RECEIVER INFORMATION *****

DESCRIPTION OF RECEIVER # 1

person

Distance from center of 12-ft wide, single lane roadway (ft): 50.0
A-weighted Hourly Equivalent Sound Level without Barrier (dBA): 66.3

***** CASE INFORMATION *****

***** Results calculated with TNM Version 2.5 *****

Beach Park Boulevard Northeast of Gull Avenue Existing

***** TRAFFIC VOLUME/SPEED INFORMATION *****

Automobile volume (v/h):	600.0
Average automobile speed (mph):	35.0
Medium truck volume (v/h):	0.0
Average medium truck speed (mph):	0.0
Heavy truck volume (v/h):	0.0
Average heavy truck speed (mph):	0.0
Bus volume (v/h):	0.0
Average bus speed (mph):	0.0
Motorcycle volume (v/h):	0.0
Average Motorcycle speed (mph):	0.0

***** TERRAIN SURFACE INFORMATION *****

Terrain surface: hard

***** RECEIVER INFORMATION *****

DESCRIPTION OF RECEIVER # 1

person

Distance from center of 12-ft wide, single lane roadway (ft): 50.0
A-weighted Hourly Equivalent Sound Level without Barrier (dBA): 61.7

***** CASE INFORMATION *****

***** Results calculated with TNM Version 2.5 *****

Beach Park Boulevard Northeast of Gull Avenue Existing+Project

***** TRAFFIC VOLUME/SPEED INFORMATION *****

Automobile volume (v/h):	600.0
Average automobile speed (mph):	35.0
Medium truck volume (v/h):	0.0
Average medium truck speed (mph):	0.0
Heavy truck volume (v/h):	6.0
Average heavy truck speed (mph):	35.0
Bus volume (v/h):	0.0
Average bus speed (mph):	0.0
Motorcycle volume (v/h):	0.0
Average Motorcycle speed (mph):	0.0

***** TERRAIN SURFACE INFORMATION *****

Terrain surface: hard

***** RECEIVER INFORMATION *****

DESCRIPTION OF RECEIVER # 1

person

Distance from center of 12-ft wide, single lane roadway (ft): 50.0
A-weighted Hourly Equivalent Sound Level without Barrier (dBA): 62.4

***** CASE INFORMATION *****

***** Results calculated with TNM Version 2.5 *****

Beach Park Boulevard between Egret Court and Sanderling Street Existing

***** TRAFFIC VOLUME/SPEED INFORMATION *****

Automobile volume (v/h):	442.0
Average automobile speed (mph):	35.0
Medium truck volume (v/h):	0.0
Average medium truck speed (mph):	0.0
Heavy truck volume (v/h):	0.0
Average heavy truck speed (mph):	0.0
Bus volume (v/h):	0.0
Average bus speed (mph):	0.0
Motorcycle volume (v/h):	0.0
Average Motorcycle speed (mph):	0.0

***** TERRAIN SURFACE INFORMATION *****

Terrain surface: hard

***** RECEIVER INFORMATION *****

DESCRIPTION OF RECEIVER # 1

person

Distance from center of 12-ft wide, single lane roadway (ft): 50.0
A-weighted Hourly Equivalent Sound Level without Barrier (dBA): 60.4

***** CASE INFORMATION *****

***** Results calculated with TNM Version 2.5 *****

Beach Park Boulevard between Egret Court and Sanderling Street Existing+Project

***** TRAFFIC VOLUME/SPEED INFORMATION *****

Automobile volume (v/h):	442.0
Average automobile speed (mph):	35.0
Medium truck volume (v/h):	0.0
Average medium truck speed (mph):	0.0
Heavy truck volume (v/h):	3.0
Average heavy truck speed (mph):	35.0
Bus volume (v/h):	0.0
Average bus speed (mph):	0.0
Motorcycle volume (v/h):	0.0
Average Motorcycle speed (mph):	0.0

***** TERRAIN SURFACE INFORMATION *****

Terrain surface: hard

***** RECEIVER INFORMATION *****

DESCRIPTION OF RECEIVER # 1

person

Distance from center of 12-ft wide, single lane roadway (ft): 50.0
A-weighted Hourly Equivalent Sound Level without Barrier (dBA): 60.9

***** CASE INFORMATION *****

***** Results calculated with TNM Version 2.5 *****

Beach Park Boulevard between Gull Avenue and Marlin Avenue Existing

***** TRAFFIC VOLUME/SPEED INFORMATION *****

Automobile volume (v/h):	440.0
Average automobile speed (mph):	35.0
Medium truck volume (v/h):	0.0
Average medium truck speed (mph):	0.0
Heavy truck volume (v/h):	0.0
Average heavy truck speed (mph):	0.0
Bus volume (v/h):	0.0
Average bus speed (mph):	0.0
Motorcycle volume (v/h):	0.0
Average Motorcycle speed (mph):	0.0

***** TERRAIN SURFACE INFORMATION *****

Terrain surface: hard

***** RECEIVER INFORMATION *****

DESCRIPTION OF RECEIVER # 1

person

Distance from center of 12-ft wide, single lane roadway (ft): 50.0
A-weighted Hourly Equivalent Sound Level without Barrier (dBA): 60.4

***** CASE INFORMATION *****

***** Results calculated with TNM Version 2.5 *****

Beach Park Boulevard between Gull Avenue and Marlin Avenue Existing+Project

***** TRAFFIC VOLUME/SPEED INFORMATION *****

Automobile volume (v/h):	440.0
Average automobile speed (mph):	35.0
Medium truck volume (v/h):	0.0
Average medium truck speed (mph):	0.0
Heavy truck volume (v/h):	3.0
Average heavy truck speed (mph):	35.0
Bus volume (v/h):	0.0
Average bus speed (mph):	0.0
Motorcycle volume (v/h):	0.0
Average Motorcycle speed (mph):	0.0

***** TERRAIN SURFACE INFORMATION *****

Terrain surface: hard

***** RECEIVER INFORMATION *****

DESCRIPTION OF RECEIVER # 1

person

Distance from center of 12-ft wide, single lane roadway (ft): 50.0
A-weighted Hourly Equivalent Sound Level without Barrier (dBA): 60.9

***** CASE INFORMATION *****

***** Results calculated with TNM Version 2.5 *****

Pitcairn Drive between Edgewater Boulevard and Melbourne Street Existing

***** TRAFFIC VOLUME/SPEED INFORMATION *****

Automobile volume (v/h):	608.0
Average automobile speed (mph):	25.0
Medium truck volume (v/h):	0.0
Average medium truck speed (mph):	0.0
Heavy truck volume (v/h):	0.0
Average heavy truck speed (mph):	0.0
Bus volume (v/h):	0.0
Average bus speed (mph):	0.0
Motorcycle volume (v/h):	0.0
Average Motorcycle speed (mph):	0.0

***** TERRAIN SURFACE INFORMATION *****

Terrain surface: hard

***** RECEIVER INFORMATION *****

DESCRIPTION OF RECEIVER # 1

person

Distance from center of 12-ft wide, single lane roadway (ft): 50.0
A-weighted Hourly Equivalent Sound Level without Barrier (dBA): 57.6

***** CASE INFORMATION *****

***** Results calculated with TNM Version 2.5 *****

Pitcairn Drive between Edgewater Boulevard and Melbourne Street Existing+Project

***** TRAFFIC VOLUME/SPEED INFORMATION *****

Automobile volume (v/h):	608.0
Average automobile speed (mph):	25.0
Medium truck volume (v/h):	0.0
Average medium truck speed (mph):	0.0
Heavy truck volume (v/h):	4.0
Average heavy truck speed (mph):	25.0
Bus volume (v/h):	0.0
Average bus speed (mph):	0.0
Motorcycle volume (v/h):	0.0
Average Motorcycle speed (mph):	0.0

***** TERRAIN SURFACE INFORMATION *****

Terrain surface: hard

***** RECEIVER INFORMATION *****

DESCRIPTION OF RECEIVER # 1

person

Distance from center of 12-ft wide, single lane roadway (ft): 50.0
A-weighted Hourly Equivalent Sound Level without Barrier (dBA): 58.6

***** CASE INFORMATION *****

***** Results calculated with TNM Version 2.5 *****

Segment 1,5,6,7,and8

***** TRAFFIC VOLUME/SPEED INFORMATION *****

Automobile volume (v/h):	0.0
Average automobile speed (mph):	0.0
Medium truck volume (v/h):	0.0
Average medium truck speed (mph):	0.0
Heavy truck volume (v/h):	2.0
Average heavy truck speed (mph):	15.0
Bus volume (v/h):	0.0
Average bus speed (mph):	0.0
Motorcycle volume (v/h):	0.0
Average Motorcycle speed (mph):	0.0

***** TERRAIN SURFACE INFORMATION *****

Terrain surface: hard

***** RECEIVER INFORMATION *****

DESCRIPTION OF RECEIVER # 1

person

Distance from center of 12-ft wide, single lane roadway (ft): 50.0
A-weighted Hourly Equivalent Sound Level without Barrier (dBA): 50.2

***** CASE INFORMATION *****

***** Results calculated with TNM Version 2.5 *****

Segment 2

***** TRAFFIC VOLUME/SPEED INFORMATION *****

Automobile volume (v/h):	0.0
Average automobile speed (mph):	0.0
Medium truck volume (v/h):	0.0
Average medium truck speed (mph):	0.0
Heavy truck volume (v/h):	9.0
Average heavy truck speed (mph):	15.0
Bus volume (v/h):	0.0
Average bus speed (mph):	0.0
Motorcycle volume (v/h):	0.0
Average Motorcycle speed (mph):	0.0

***** TERRAIN SURFACE INFORMATION *****

Terrain surface: hard

***** RECEIVER INFORMATION *****

DESCRIPTION OF RECEIVER # 1

person

Distance from center of 12-ft wide, single lane roadway (ft): 50.0
A-weighted Hourly Equivalent Sound Level without Barrier (dBA): 56.7

***** CASE INFORMATION *****

***** Results calculated with TNM Version 2.5 *****

Segment 3

***** TRAFFIC VOLUME/SPEED INFORMATION *****

Automobile volume (v/h):	0.0
Average automobile speed (mph):	0.0
Medium truck volume (v/h):	0.0
Average medium truck speed (mph):	0.0
Heavy truck volume (v/h):	12.0
Average heavy truck speed (mph):	15.0
Bus volume (v/h):	0.0
Average bus speed (mph):	0.0
Motorcycle volume (v/h):	0.0
Average Motorcycle speed (mph):	0.0

***** TERRAIN SURFACE INFORMATION *****

Terrain surface: hard

***** RECEIVER INFORMATION *****

DESCRIPTION OF RECEIVER # 1

person

Distance from center of 12-ft wide, single lane roadway (ft): 50.0
A-weighted Hourly Equivalent Sound Level without Barrier (dBA): 58.0

***** CASE INFORMATION *****

***** Results calculated with TNM Version 2.5 *****

Segment 4

***** TRAFFIC VOLUME/SPEED INFORMATION *****

Automobile volume (v/h):	0.0
Average automobile speed (mph):	0.0
Medium truck volume (v/h):	0.0
Average medium truck speed (mph):	0.0
Heavy truck volume (v/h):	5.0
Average heavy truck speed (mph):	15.0
Bus volume (v/h):	0.0
Average bus speed (mph):	0.0
Motorcycle volume (v/h):	0.0
Average Motorcycle speed (mph):	0.0

***** TERRAIN SURFACE INFORMATION *****

Terrain surface: hard

***** RECEIVER INFORMATION *****

DESCRIPTION OF RECEIVER # 1

person

Distance from center of 12-ft wide, single lane roadway (ft): 50.0
A-weighted Hourly Equivalent Sound Level without Barrier (dBA): 54.2